

SHAW

12985BK-LL

LARGE WALL MOUNT LANTERN

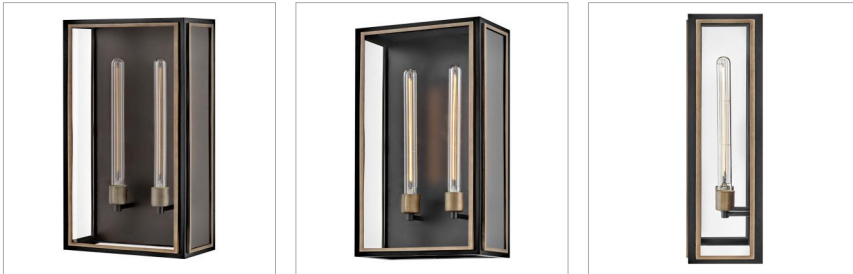
Traditional in style and unique in character, Shaw is a showstopper for indoor and outdoor spaces. Distinguished by its dramatic frame and enchanting design elements, Shaw's robust, clear glass panels, rich two-tone finish, and captivating details unite to deliver dashing heritage charm.

DETAILS	
FINISH:	Black
MATERIAL:	Aluminum
GLASS:	Clear
DIMMABLE:	YES - CL TYPE DIMMER (SSL7A)

DIMENSIONS	
WIDTH:	12"
HEIGHT:	25"
WEIGHT:	14.3lb
BACK PLATE:	11.5"W X 24.75"H
EXTENSION:	6.3"
TOP TO OUTLET:	4.75"

LIGHT SOURCE	
LIGHT SOURCE:	Socketed
LED NAME:	E26T10LED6W
WATTAGE:	2-12w Med. LED *Included
VOLTAGE:	120v
LUMENS:	600
CRI:	90
INCANDESCENT EQUIVALENCY:	2 x 30w
DIMMABLE:	YES - CL TYPE DIMMER (SSL7A)

SHIPPING	
CARTON LENGTH:	15.3
CARTON WIDTH:	9.5
CARTON HEIGHT:	29
CARTON WEIGHT:	16.7



PRODUCT DETAILS:

- Suitable for use in wet (outdoor direct rain) locations as defined by NEC and CEC. Meets United States UL Underwriters Laboratories & CSA Canadian Standards Association Product Safety Standards
- LED Bulbs carry a 3-year limited warranty
- Classic lines and heritage details complement traditional architecture
- 2-year finish warranty
- All-in-one fixture design comes with an LED bulb
- Mounting hardware is hidden on the back plate to ensure a clean silhouette
- Adjustable mounting hardware. Top to outlet range 4.75" to 19.75"

HINKLEY

HINKLEY
33000 Pin Oak Parkway
Avon Lake, OH 44012

PHONE: (440) 653-5500
Toll Free: 1 (800) 446-5539

hinkley.com