

# ATLANTIS

Atlantis features a minimalist design for the ultimate in urban sophistication. Constructed of solid aluminum and Dark Sky compliant, Atlantis provides a chic solution to eco-conscious homeowners.

**FINISH:** Satin Black  
**GLASS:** Etched Lens



**15014SK-LL**  
12V SMALL LED PATH LIGHT  
6.5" W, 15.8" H  
Socketed  
1-1.50w Mini Wedge LED \*Included



**1518SK-LL**  
12V LARGE LED PATH LIGHT  
6.5" W, 22" H  
Socketed  
1-1.50w Mini Wedge LED \*Included



**15501SK**  
12V SMALL ROUND BOLLARD  
2" W, 20" H  
Socketed  
1-4w MR11 LED \*Included



**15502SK**  
12V SMALL SQUARE BOLLARD  
2" W, 20" H  
Socketed  
1-4w MR11 LED \*Included



**15601SK**  
12V LARGE ROUND BOLLARD  
3" W, 30" H  
Socketed  
1-4w MR16 LED \*Included



**15602SK**  
12V SQUARE BOLLARD  
3" W, 30" H  
Socketed  
1-4w MR16 LED \*Included

# HINKLEY

**HINKLEY**  
33000 Pin Oak Parkway  
Avon Lake, OH 44012

**PHONE: (440) 653-5500**  
Toll Free: 1 (800) 446-5539

[hinkley.com](http://hinkley.com)

# ATLANTIS

Atlantis features a minimalist design for the ultimate in urban sophistication. Constructed of solid aluminum and Dark Sky compliant, Atlantis provides a chic solution to eco-conscious homeowners.

**FINISH:** Satin Black  
**GLASS:** Etched Lens



**1639SK-LL**  
EXTRA LARGE WALL MOUNT LANTERN  
12" W, 36" H  
Socketed  
3-6.50w GU10 LED \*Included



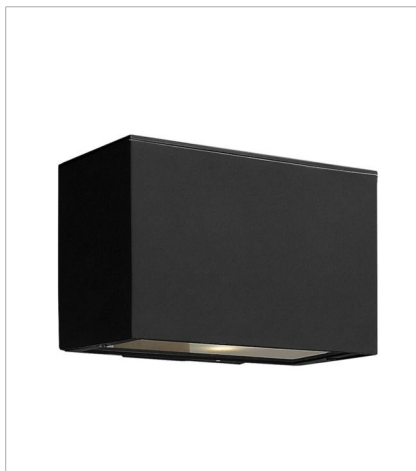
**1640SK-LL**  
MEDIUM WALL MOUNT LANTERN  
2.8" W, 16" H  
Socketed  
2-6w MR16 LED \*Included



**1644SK-LL**  
LARGE WALL MOUNT LANTERN  
3" W, 24" H  
Socketed  
2-6w MR16 LED \*Included



**1645SK-LL**  
EXTRA SMALL UP/DOWN WALL MO...  
9" W, 6" H  
Socketed  
1-12w Med. LED \*Included



**1646SK-LL**  
EXTRA SMALL DOWN LIGHT WALL...  
9" W, 6" H  
Socketed  
1-12w Med. LED \*Included



**1648SK-LL**  
MEDIUM WALL MOUNT LANTERN  
6" W, 16" H  
Socketed  
2-6w MR16 LED \*Included

# HINKLEY

**HINKLEY**  
33000 Pin Oak Parkway  
Avon Lake, OH 44012

**PHONE: (440) 653-5500**  
Toll Free: 1 (800) 446-5539

[hinkley.com](http://hinkley.com)

# ATLANTIS

Atlantis features a minimalist design for the ultimate in urban sophistication. Constructed of solid aluminum and Dark Sky compliant, Atlantis provides a chic solution to eco-conscious homeowners.

**FINISH:** Satin Black  
**GLASS:** Etched Lens



**1649SK-LL**  
LARGE WALL MOUNT LANTERN  
9" W, 24" H  
Socketed  
2-6.50w GU10 LED \*Included



**1641SK-LL**  
LARGE POST TOP OR PIER MOUN...  
6.8" W, 24.5" H  
Socketed  
2-6w MR16 LED \*Included