

# TOURNON

Tournon merges timeless appeal with contemporary functionality. The steel frame holds the clear seedy glass shade surrounding the bulbs within. An oversized yoke completes the midcentury modern design.

**FINISH:** Heritage Brass with Black accents, Heritage Brass, Heritage Brass with Polished White accents  
**GLASS:** Clear Seedy



**38113HB**  
MEDIUM PENDANT  
15" W, 19" H  
Socketed  
3-5w Cand. LED, 60w Equiv.



**38113HB-HB**  
MEDIUM PENDANT  
15" W, 19" H  
Socketed  
3-5w Cand. LED, 60w Equiv.



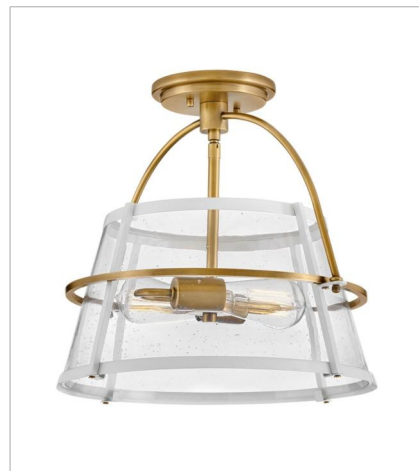
**38113HB-PT**  
MEDIUM PENDANT  
15" W, 19" H  
Socketed  
3-5w Cand. LED, 60w Equiv.



**38111HB**  
MEDIUM SEMI-FLUSH MOUNT  
15" W, 13.5" H  
Socketed  
2-12w Med. LED, 100w Equiv.



**38111HB-HB**  
MEDIUM SEMI-FLUSH MOUNT  
15" W, 13.5" H  
Socketed  
2-12w Med. LED, 100w Equiv.



**38111HB-PT**  
MEDIUM SEMI-FLUSH MOUNT  
15" W, 13.5" H  
Socketed  
2-12w Med. LED, 100w Equiv.

# HINKLEY

HINKLEY  
33000 Pin Oak Parkway  
Avon Lake, OH 44012

PHONE: (440) 653-5500  
Toll Free: 1 (800) 446-5539

[hinkley.com](http://hinkley.com)