

# SAG HARBOR

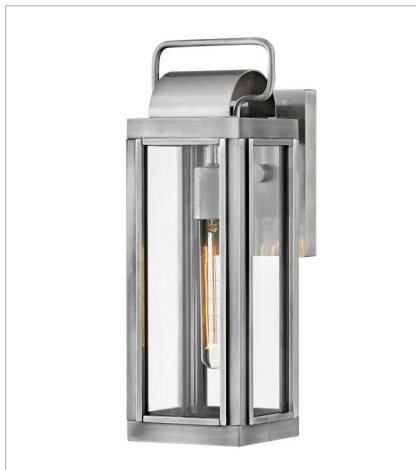
*Heritage*  
COLLECTIBLES

Sag Harbor unites updated elements with time-tested details. A simple, clean cage in a Burnished Bronze or Antique Brushed Aluminum finish anchors a knurled brass socket to forge an unforgettable mixed metal look. Durable, aluminum construction combines with clear glass panels to create a beacon of enduring style.

**FINISH:** Antique Brushed Aluminum  
**GLASS:** Clear



**2840AL**  
SMALL WALL MOUNT LANTERN  
5.5" W, 16.3" H  
Socketed  
1-10w Med. LED, 100w Equiv.



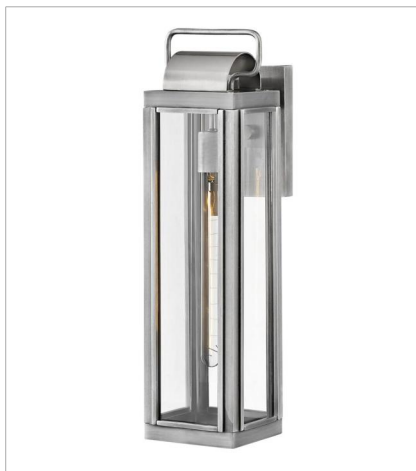
**2840AL-LL**  
MEDIUM WALL MOUNT LANTERN  
5.5" W, 16.3" H  
Socketed  
1-5w Med. LED \*Included



**2844AL**  
MEDIUM WALL MOUNT LANTERN  
9" W, 16.5" H  
Socketed  
2-5w Cand. LED, 60w Equiv.



**2845AL**  
LARGE WALL MOUNT LANTERN  
5.5" W, 21.3" H  
Socketed  
1-10w Med. LED, 100w Equiv.



**2845AL-LL**  
LARGE WALL MOUNT LANTERN  
5.5" W, 21.3" H  
Socketed  
1-5w Med. LED \*Included

# HINKLEY

**HINKLEY**  
33000 Pin Oak Parkway  
Avon Lake, OH 44012

**PHONE: (440) 653-5500**  
Toll Free: 1 (800) 446-5539

[hinkley.com](http://hinkley.com)