

DUNE

FR30206BNG-BG

MEDIUM SINGLE TIER CHANDELIER

Dune's bohemian chic design showcases strands of soft sea glass combined with a Burnished Gold finish. The designs blend a sophisticated silhouette with organic elements inspired by sun and surf. Dune infuses any space with timeless, mesmerizing elegance.

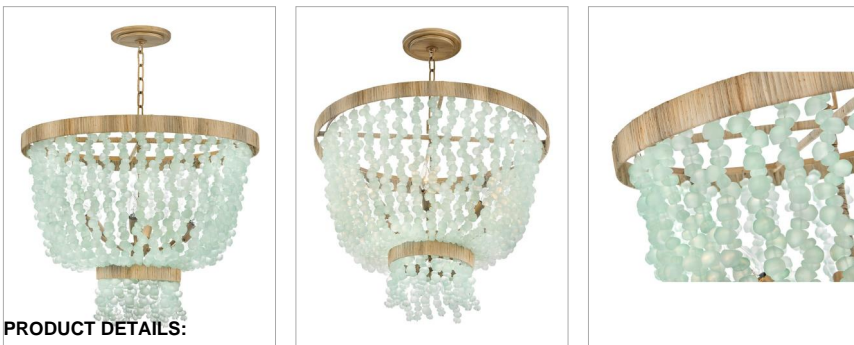
DETAILS	
FINISH:	Burnished Gold
MATERIAL:	Steel
GLASS:	Blue Sea Glass
SLOPE DEGREE:	90
DIMMABLE:	YES, WITH DIMMABLE LAMP (NOT INCLUDED)

DIMENSIONS	
WIDTH:	25"
HEIGHT:	24.3"
WEIGHT:	40lb

LIGHT SOURCE	
LIGHT SOURCE:	Socketed
WATTAGE:	6-5w Cand. LED, 60w Equiv.
VOLTAGE:	120v

MOUNTING	
CANOPY:	6.5" Dia.
LEAD WIRE:	1 X 144"

SHIPPING	
CARTON LENGTH:	27
CARTON WIDTH:	27
CARTON HEIGHT:	11
CARTON WEIGHT:	51



PRODUCT DETAILS:

- This item may be hung on a sloped ceiling
- Suitable for use in dry (indoor) locations as defined by NEC and CEC. Meets United States UL Underwriters Laboratories & CSA Canadian Standards Association Product Safety Standards.
- Classic, elegant lines and timeless details enhance a traditional space
- Luxurious gold finish with opulent sheen