

# CATALINA

## 23010BK

### MEDIUM WALL MOUNT LANTERN

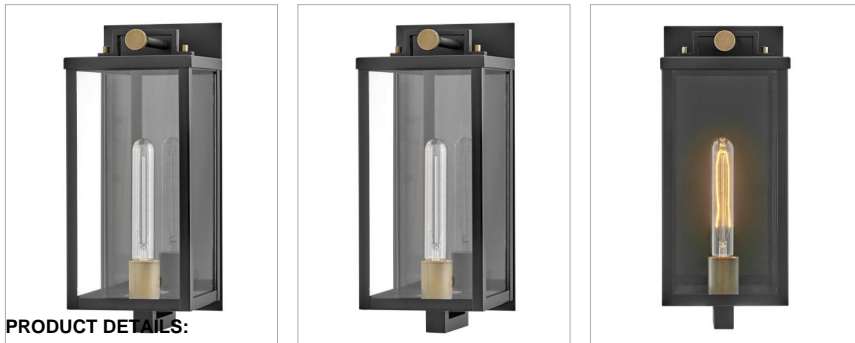
Striking and airy, Catalina breathes modern simplicity into outdoor spaces. Oversized clear glass, a unique single socket, and a two-tone Black with Burnished Bronze finish pair perfectly to present a statement-making fixture. The finishing touch is a floating effect created by the classic rectangular lantern design suspended from a top knob.

DETAILS	
FINISH:	Black
MATERIAL:	Aluminum
GLASS:	Clear
DIMMABLE:	YES, WITH DIMMABLE LAMP (NOT INCLUDED)

DIMENSIONS	
WIDTH:	6.5"
HEIGHT:	16"
WEIGHT:	6.3lb
BACK PLATE:	5.25"W X 14"H
EXTENSION:	8"
TOP TO OUTLET:	8"

LIGHT SOURCE	
LIGHT SOURCE:	Socketed
WATTAGE:	1-12w Med. LED, 60w Equiv.
VOLTAGE:	120v

SHIPPING	
CARTON LENGTH:	10.3
CARTON WIDTH:	9.5
CARTON HEIGHT:	19.5
CARTON WEIGHT:	7.9



#### PRODUCT DETAILS:

- Mounting hardware is hidden on the back plate to ensure a clean silhouette
- Suitable for use in wet (outdoor direct rain) locations as defined by NEC and CEC. Meets United States UL Underwriters Laboratories & CSA Canadian Standards Association Product Safety Standards
- Ideal for vintage filament bulbs (not included)
- 2-year finish warranty
- Bold lines and a clean, minimalist style complement contemporary architecture

# HINKLEY

HINKLEY  
33000 Pin Oak Parkway  
Avon Lake, OH 44012

PHONE: (440) 653-5500  
Toll Free: 1 (800) 446-5539

[hinkley.com](http://hinkley.com)