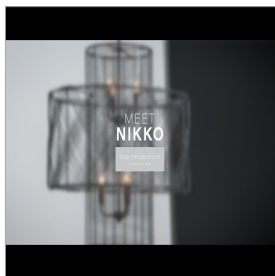


lisa mcdennon
COLLECTION



PRODUCT DETAILS:

- Suitable for use in dry (indoor) locations as defined by NEC and CEC. Meets United States UL Underwriters Laboratories & CSA Canadian Standards Association Product Safety Standards.
- This fixture includes multiple down stems in various lengths to customize the installation height of the fixture, including one 6" stem and two 12" stems
- Eclectic style that mixes unconventional elements. Unique and sophisticated designs that feel modern and vintage at the same time.
- The Lisa McDennon Collection offers a striking mix of edgy, sculptural silhouettes that incorporate modern, organic elements and luxe materials, brought to life by her innovative and original point of view.

NIKKO

41065BLK

MEDIUM MULTI TIER CHANDELIER

Nikko is a stunning study in contrasts: simultaneously bold and airy, minimalist yet intricate. Its sleek wire design is woven into a striking pendant that evenly radiates light throughout. The transitional silhouette, infused with a subtle coastal nuance, is available in either Light Ashwood or Black finish options. Nikko is part of the Lisa McDennon Collection.

| DETAILS | |
|-----------|---|
| FINISH: | Black |
| MATERIAL: | Steel |
| DIMMABLE: | YES - WITH DIMMABLE LAMP (NOT INCLUDED) |

| DIMENSIONS | |
|------------|--------|
| WIDTH: | 26" |
| HEIGHT: | 27.8" |
| WEIGHT: | 30.5lb |

| LIGHT SOURCE | |
|---------------|----------------------------|
| LIGHT SOURCE: | Socketed |
| WATTAGE: | 6-5w Cand. LED, 60w Equiv. |
| VOLTAGE: | 120v |

| MOUNTING | |
|-------------|------------|
| CANOPY: | 5.25" Dia. |
| LEAD WIRE: | 1 X 144" |
| MAX HEIGHT: | 58 |

| SHIPPING | |
|----------------|------|
| CARTON LENGTH: | 30 |
| CARTON WIDTH: | 30.8 |
| CARTON HEIGHT: | 30 |
| CARTON WEIGHT: | 38.1 |

HINKLEY

HINKLEY
33000 Pin Oak Parkway
Avon Lake, OH 44012

PHONE: (440) 653-5500
Toll Free: 1 (800) 446-5539

hinkley.com