

BOTANICA

FR35104BNG

LARGE CONVERTIBLE PENDANT

Infused with a bold earthy edge, Botanica ensures its dramatic hand-welded Burnished Gold leaves are the showstopping focal point. Available in several silhouettes, including a bold metal orb, chic linen drum design and a striking flush mount.

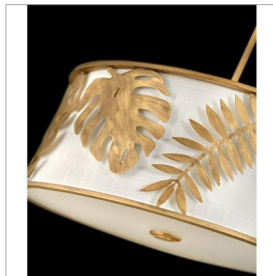
DETAILS	
FINISH:	Burnished Gold
MATERIAL:	Steel
SHADE:	White Linen
SLOPE DEGREE:	90
DIMMABLE:	YES - WITH DIMMABLE LAMP (NOT INCLUDED)

DIMENSIONS	
WIDTH:	16"
HEIGHT:	8"
WEIGHT:	6.1lb

LIGHT SOURCE	
LIGHT SOURCE:	Socketed
WATTAGE:	3-10w Med. LED, 60w Equiv.
VOLTAGE:	120v

MOUNTING	
CANOPY:	6.5" Dia.
LEAD WIRE:	1 X 120"
MAX HEIGHT:	37.5

SHIPPING	
CARTON LENGTH:	19.5
CARTON WIDTH:	19.5
CARTON HEIGHT:	13.5
CARTON WEIGHT:	8



PRODUCT DETAILS:

- Suitable for use in dry (indoor) locations as defined by NEC and CEC. Meets United States UL Underwriters Laboratories & CSA Canadian Standards Association Product Safety Standards.
- This fixture includes multiple down stems in various lengths to customize the installation height of the fixture, including one 6" stem and two 12" stems
- This item may be hung on a sloped ceiling
- Luxurious gold finish with opulent sheen
- Eclectic style that mixes unconventional elements. Unique and sophisticated designs that feel modern and vintage at the same time.
- Convertible fixture can be hung as a pendant or semi-flush mount
- Height when mounted as a semi-flush is 13.75"

HINKLEY

HINKLEY
33000 Pin Oak Parkway
Avon Lake, OH 44012

PHONE: (440) 653-5500
Toll Free: 1 (800) 446-5539

hinkley.com