

REVEL

FR30905BNG

LARGE SINGLE TIER CHANDELIER

A compelling design that captivates from any angle, the Revel family gleams with sophistication. Luxurious crystal rods are honed into unexpected asymmetrical formations to produce an organic elegance that is both raw and refined. Revel's linear and circular chandeliers are available in both Burnished Gold and rich Black finish options.

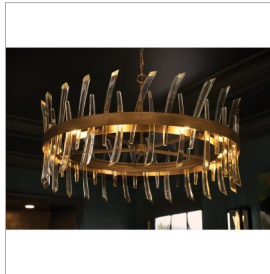
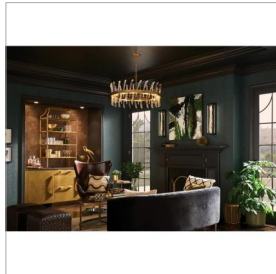
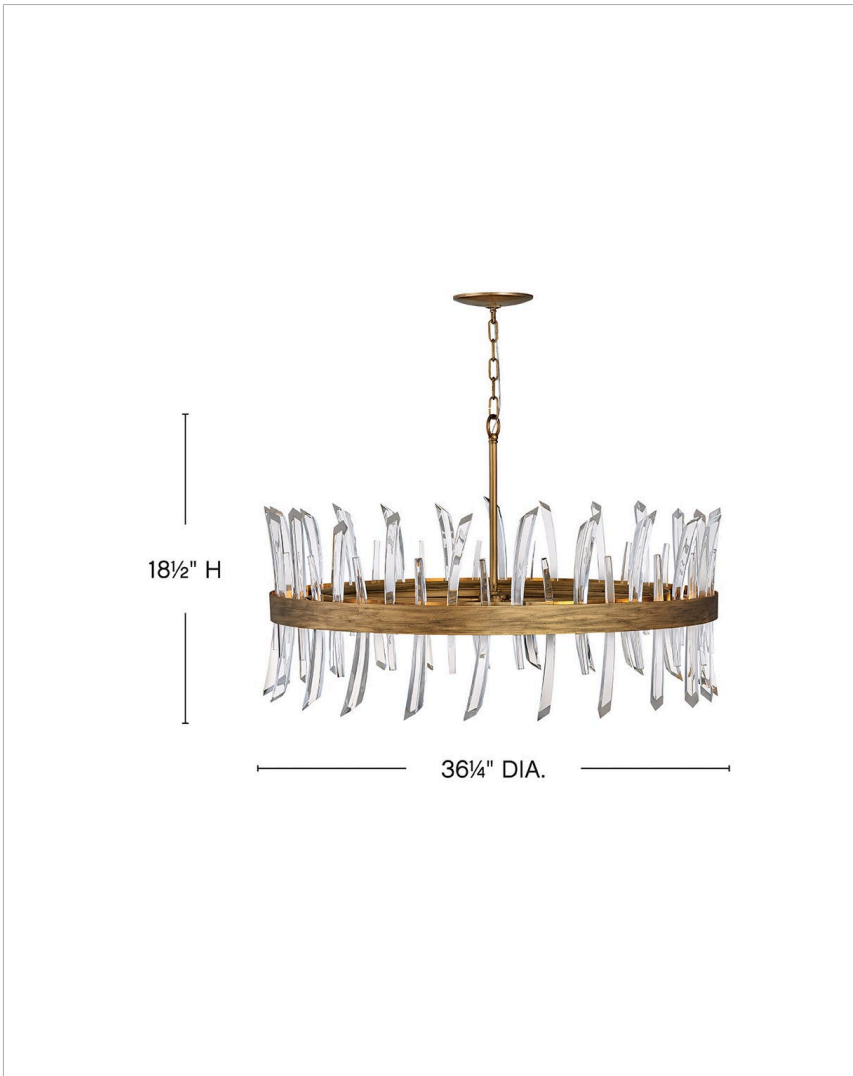
DETAILS	
FINISH:	Burnished Gold
MATERIAL:	Steel
SLOPE DEGREE:	90
DIMMABLE:	YES - WITH DIMMABLE LAMP (NOT INCLUDED)

DIMENSIONS	
WIDTH:	36.3"
HEIGHT:	18.5"
WEIGHT:	17lb

LIGHT SOURCE	
LIGHT SOURCE:	Socketed
WATTAGE:	10-5w Cand. LED, 60w Equiv.
VOLTAGE:	120v

MOUNTING	
CANOPY:	6.5" Dia.
LEAD WIRE:	1 X 144"

SHIPPING	
CARTON LENGTH:	38
CARTON WIDTH:	38.5
CARTON HEIGHT:	11
CARTON WEIGHT:	41



PRODUCT DETAILS:

- Can be hung on a sloped ceiling
- Dry Rated
- Striking and glamorous silhouette with luxe details and a rich finish that makes a dramatic statement
- This design features a luxurious gold finish with an opulent sheen